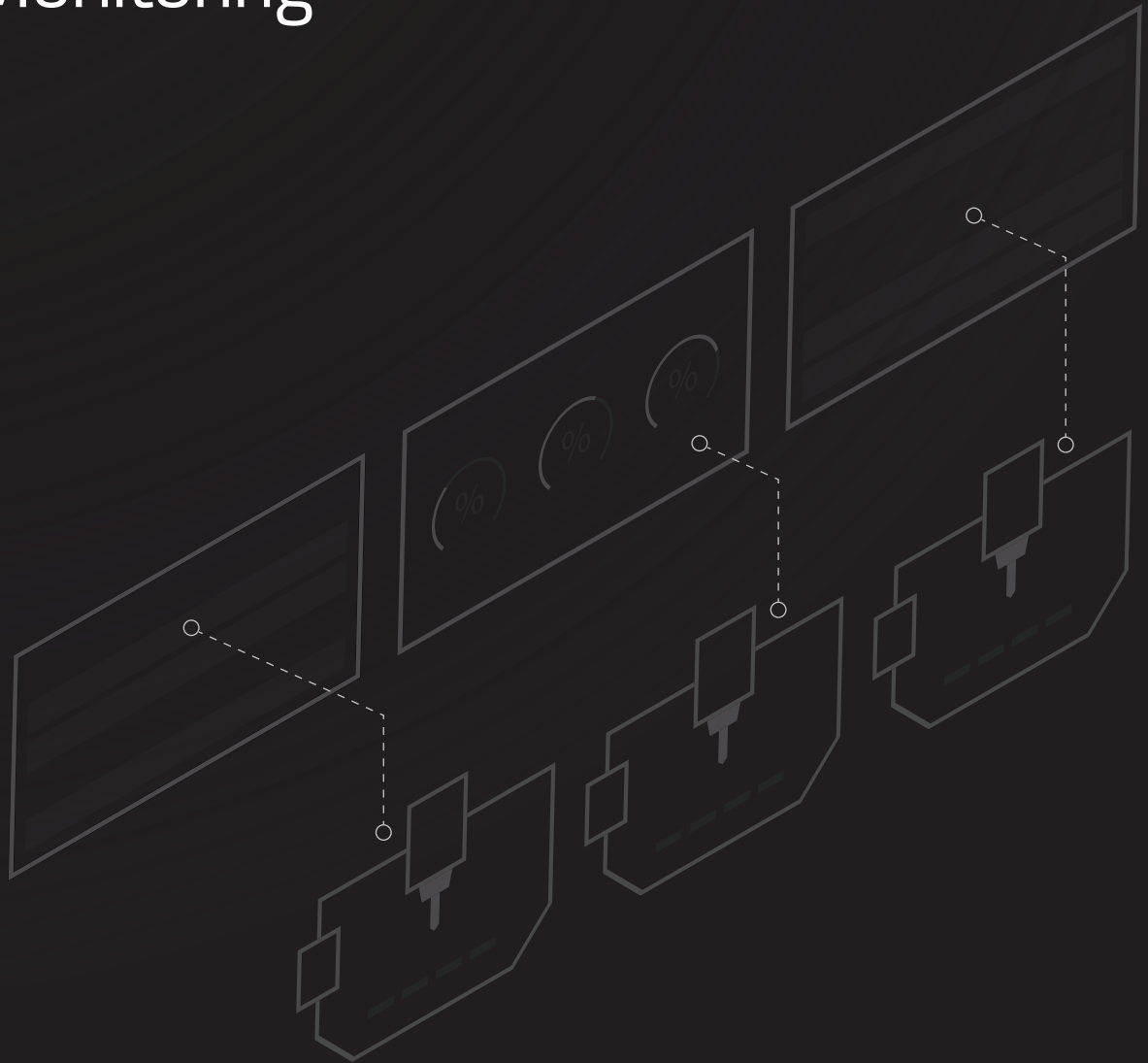




Manufacturing Data Collection and Monitoring

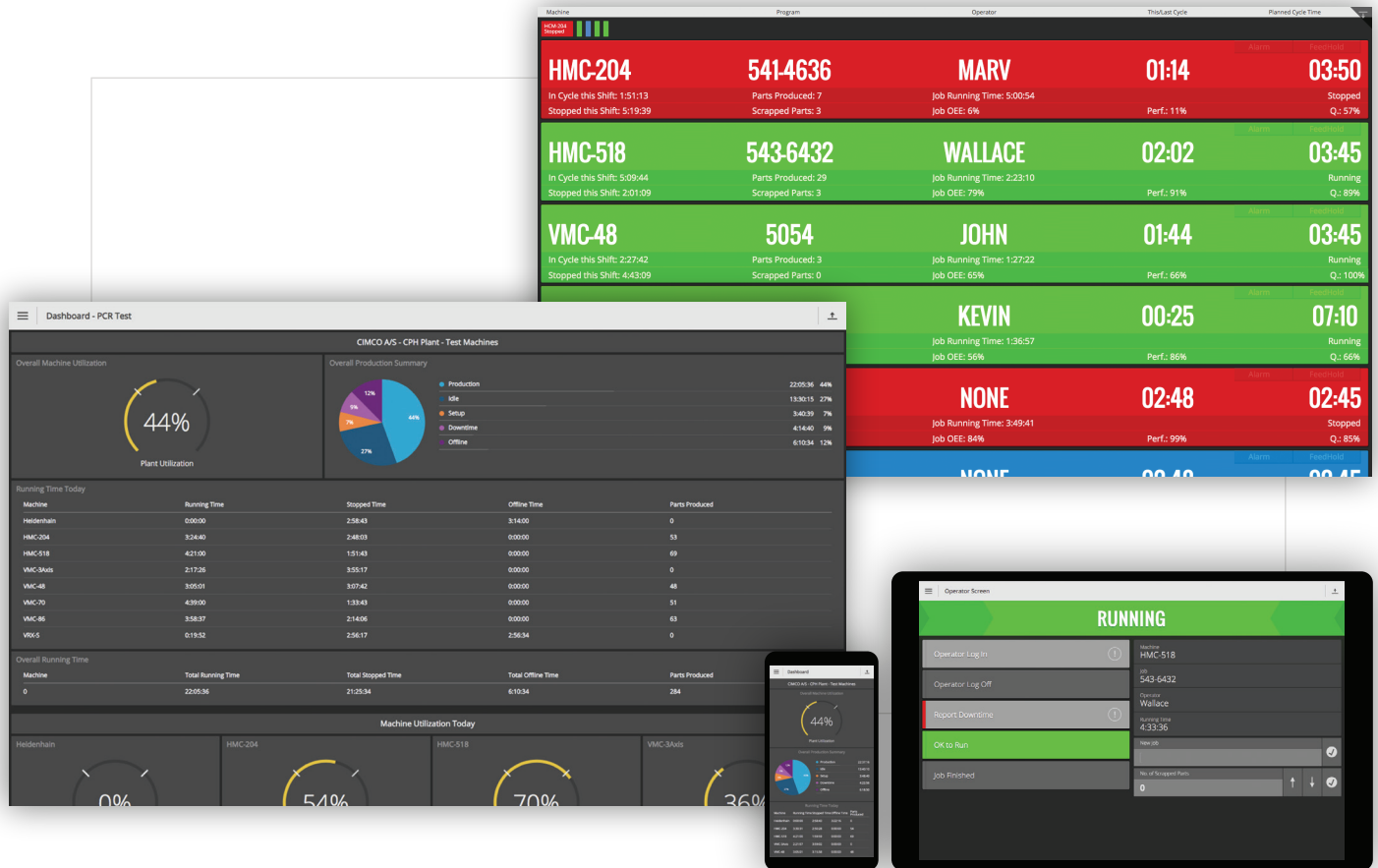


INTRODUCTION

What is CIMCO MDC-Max?

Unlock the full potential of your production.
 Improve processes, resource use and critical reponse times.

MDC-Max enables you to collect and analyze data from machines and operators to get real-time and historic insights into your shop floor's productivity, performance and quality. Data can be used for different purposes such as real-time monitoring with Andon boards throughout the company, for planning and analysis, or for export to ERP, MES or other systems.



BENEFITS

Why use CIMCO MDC-Max?

Improved efficiency

Understand the performance of equipment and personnel with real-time data collection. Eliminate production bottlenecks and optimize resource utilization.

Accurate data collection

Eliminate manual, time consuming and often inaccurate data collection by automating and streamlining the entire data collection process.

Faster response times

Monitor and visualize the performance of equipment and personnel to respond faster, catch errors sooner, and communicate better.

Eliminate guesswork

Understand the inner workings of your production with customized reports including machine downtime, OEE and other essential KPIs.

Reduce administration time

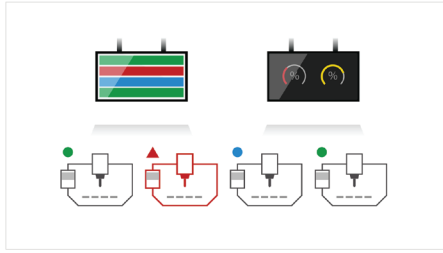
Reduce paper reliance and administrative time. Update your ERP, MES or other administrative system with real-time data from equipment and personnel.

Access your data anywhere

Access data from one or more sites directly from your mobile device. Easily check the status of equipment or any other information critical to your operation.

FEATURES

Some of the many features included



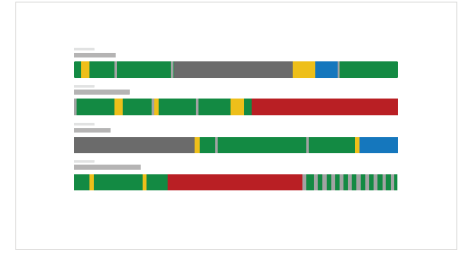
Real-time monitoring / Andon

See the current status and performance data of your machines on Andon boards, PC and mobile. Customize the layout and content of screens to suit your needs.



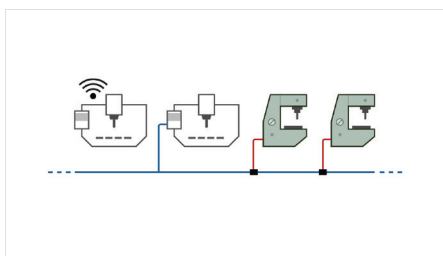
Customizable reports

Generate reports with calculation of OEE, downtime and other essential KPIs. Set production targets, work shifts and sort data by different factors.



Real-time reporting

Generate real-time reports that dynamically update as data comes in, such as machine timelines.



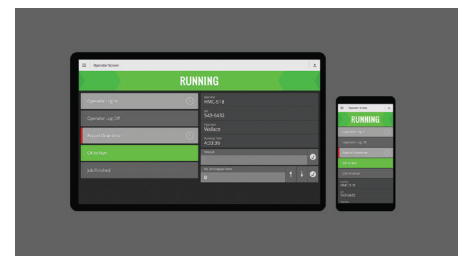
Works with your equipment

Collect data automatically or manually using your existing wireless network, Ethernet, RS-232 or Parallel I/O. Use existing barcode readers and PCs on the shopfloor.



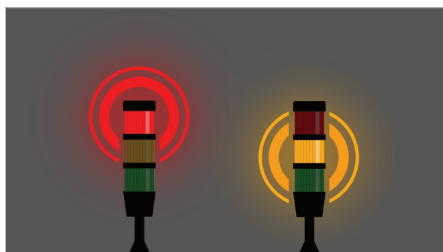
Integration with external systems

Streamline data management and workflows by updating ERP, MES or other administrative systems directly with data from MDC-Max.



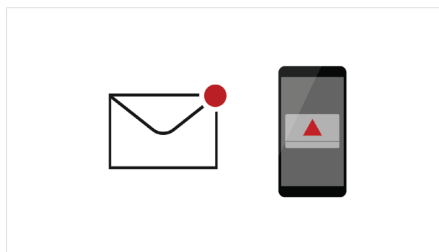
Operator interface

Enables operators to access essential information directly at the machine and enter data such as current shift, job, reasons for downtime and scrap.



Andon and signaling units

Control signaling units such as stack lights, buzzers and Andon boards that indicate the status of your machines.



Email and text notifications

MDC-Max can send text and email alerts to key staff on any machine and operator event such as automatically during unattended runs.



Secure user management

Fine-grained control over user access and permissions. View logs of user actions and system events for auditing and troubleshooting purposes.

- ✓ Supports Job and Program numbers
Associate collected data with the job running on each machine.
- ✓ Excel reports
Several options for exporting data and working with Excel.
- ✓ Barcode reader support
Enables scanning of barcodes for operator feedback.
- ✓ Unlimited number of Downtime Reasons
Collect data on any event limited only by machine capabilities.

MORE

www.cimco.com →

Visit our website to discover many more features, videos or to download our free, 30 day trial version of CIMCO MDC-Max.



CIMCO is an industry leading developer of software solutions for Computer Integrated Manufacturing and Industry 4.0. Our software suite includes advanced CNC editors, simulation software, DNC communications software, Manufacturing Data Collection for real-time monitoring and analysis of shop floor productivity, and Manufacturing Data Management for managing, organizing and securely storing production related data.

Since 1991, CIMCO has helped companies worldwide improve their competitive edge by providing reliable software and outstanding on-site assistance. Our network of CAD/CAM/CNC resellers and consultants have sold more than 100,000 licenses worldwide and we hold great pride in continuously supporting and meeting our customers' demands by developing intelligent and competitive solutions.

THE FULL SUITE OF CIMCO SOFTWARE



CIMCO Edit

Full-featured NC editing, simulation and machine communication tool. Powerful add-ons available.



CIMCO DNC-Max

The leading solution for NC program transfers to and from CNC machines. Compatible with machines and files.



CIMCO MDC-Max

Real-time manufacturing data collection. Optimize use of resources, and streamline processes.



CIMCO NC-Base

Organize, manage, and protect part programs and related production documents efficiently.



CIMCO MDM

Complete solution for manufacturing document management. Integrates with CAD/CAM systems from leading vendors.



CIMCO Scheduler

Production scheduling and order tracking solution. Improve delivery times and use of machines and resources.



CIMCO Machine Simulation

Prove-out your NC program on a 3D CNC machine model. Automatic checks for collisions, out of limit moves and more.



CIMCO CNC-Calc

A basic CAD/CAM. Draw 2D geometrical contours and lay out toolpaths for milling and turning machines.



CIMCO Mazatrol Viewer

Enables CIMCO Edit to read, preview and print Mazatrol binary files for both milling and turning.



CIMCO Teachware

E-learning solution that introduces students to working with digital machine tools.

MAIN OFFICES

DENMARK CIMCO A/S
VERMUNDSGADE 38A
COPENHAGEN, DENMARK

TEL: +45 45 85 60 50
FAX: +45 45 85 60 53
EMAIL: info@cimco.com

AMERICAS CIMCO AMERICAS LLC
1980 N ATLANTIC AVE STE 229
COCOA BEACH, FL 32931

TEL: +1 704 644 3587
FAX: +1 704 943 0514
EMAIL: info@cimco.com

CIMCO HEADQUARTERS AND MAIN TRAINING FACILITY ARE LOCATED IN THE DANISH CAPITAL COPENHAGEN. THIS IS THE BASE OF OPERATION FOR THE SALES AND SUPPORT TEAM. OUR TECHNICAL SERVICE STAFF TRAVELS WORLDWIDE AND HAS LOCAL OFFICES IN SELECT COUNTRIES.

LOCAL OFFICES / RESELLERS WORLDWIDE

EUROPE

AUSTRIA	FINLAND	NETHERLANDS	SLOVAKIA
BELARUS	FRANCE	NORWAY	SLOVENIA
BELGIUM	GERMANY	POLAND	SPAIN
BULGARIA	HUNGARY	PORTUGAL	SWEDEN
CROATIA	IRELAND	ROMANIA	SWITZERLAND
CZECH REPUBLIC	ISRAEL	RUSSIA	TURKEY
DENMARK	ITALY	SCOTLAND	UKRAINE
ESTONIA	LATVIA	SERBIA AND MONTENEGRO	UNITED KINGDOM

SOUTH / NORTH AMERICA

BRAZIL	USA
CANADA	VENEZUELA
CHILE	
COLOMBIA	
COSTA RICA	
ECUADOR	
MEXICO	
PERU	

ASIA / MIDDLE EAST / OCEANIA

AUSTRALIA	SINGAPORE
CHINA	SOUTH AFRICA
HONG KONG	SOUTH KOREA
INDIA	TAIWAN
INDONESIA	THAILAND
JAPAN	UNITED ARAB EMIRATES
MALAYSIA	VIETNAM
NEW ZEALAND	

CIMCO AUTHORIZED RESELLER



More information at
www.cimco.com



Watch our product videos at
[/cimcovieo](http://cimcovieo.com)



Follow on Facebook
[/cimco](https://www.facebook.com/cimco)



Follow on LinkedIn
[/company/cimco-a-s](https://www.linkedin.com/company/cimco-a-s)